

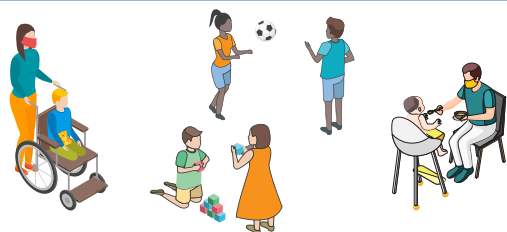
# REOPENING RI

## Child care during COVID-19: Four key principles for delivering safe care and early education

Every child care provider has a State-Approved COVID-19 Control Plan to deliver care.

### Consistent groups

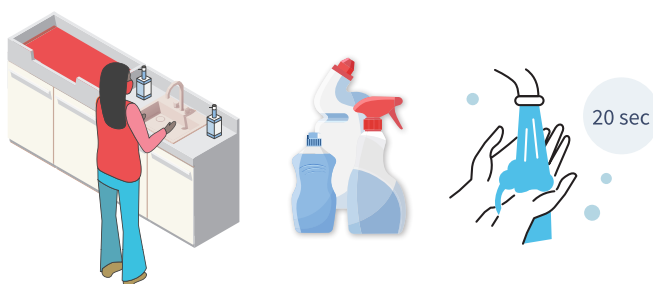
1



Maintain consistent groups of 12 (including staff) in dedicated spaces.

### Adherence to CDC guidelines for cleaning and sanitization

2



Providers must institute daily cleaning and sanitization practices in adherence to CDC guidelines. This includes handwashing requirements.

### Physical distancing

3



Individual children within consistent groups will not be expected to physically distance from one another; however, each group of 12 must maintain distance at all times and be separated by a wall, divider or partition.

### Enhanced attendance and drop-off/pick-up protocols

4



Providers will implement enhanced attendance protocols (including a daily sign-in/sign-out log) for staff and children.



Providers will implement enhanced drop-off and pick-up protocols (using a RIDOH Screening Form) to limit traffic into the facility and appropriately screen for symptomatic individuals.

**Please note:** This is not an all-inclusive list of regulatory requirements for operating child care. This guidance is subject to change as new information becomes available.