

REOPENING RI

Rules to keep you safe at work

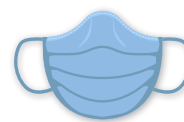
Going to work



Stay home if you're sick; return to work only when cleared to do so.

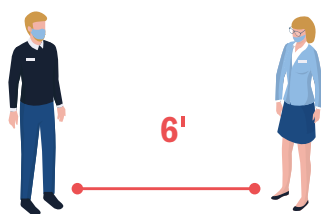


Undergo symptom screenings before entering your workplace.

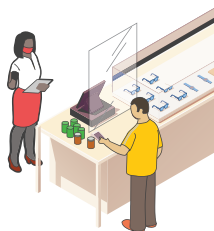


Wear a clean cloth or surgical mask over your nose and mouth.

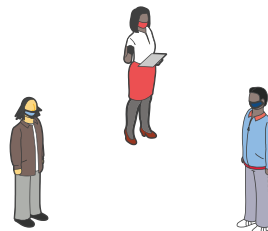
Interacting



Keep 6 feet distant from others at all times.



Stay behind any shield that is meant to be between you and customers.



Keep in-person interactions to small groups.



Avoid communal areas.

Hygiene



Clean and disinfect shared surfaces before you use them.



Wash your hands frequently with soap and water.
If unavailable, use sanitizer with >60% alcohol.



Avoid touching your eyes, nose and mouth.



Cover coughs and sneezes with your elbow or with a tissue you throw away.

Note: This is a summary. Please refer to full guidance at [ReopeningRI.com](https://reopeningri.com)